

JERSEY GIANTS

The Jersey show at the National Dairy Cattle Congress was not the National show most years but it was always a grand show with the premier herds attending from throughout the U.S. Three of the finest were Happy Valley Farm, Rossville, Georgia and Biltmore Farms, Asheville, North Carolina and Harmony Farms from Connecticut . All three herds were owned by people of means with Happy Valley and Biltmore showing mostly homebred cattle while Harmony showed several high profile purchased cows



Happy Valley Farm, Rossville, GA

Happy Valley was owned by the Hutcheson Family who made their money in the woolen mill business and later with their own dairy processing business. The farm was located in Georgia only ten miles from Chattanooga, Tennessee. In 2009 although there are no dairy cattle on the farm, Happy Valley is still active in the American Saddlebred horse business and their show horses compete at shows throughout the south. The manager of the dairy division was C.F. (Cliff) Russell, considered the very best at his trade. The Russell name is still prominent in the Jersey breed today.

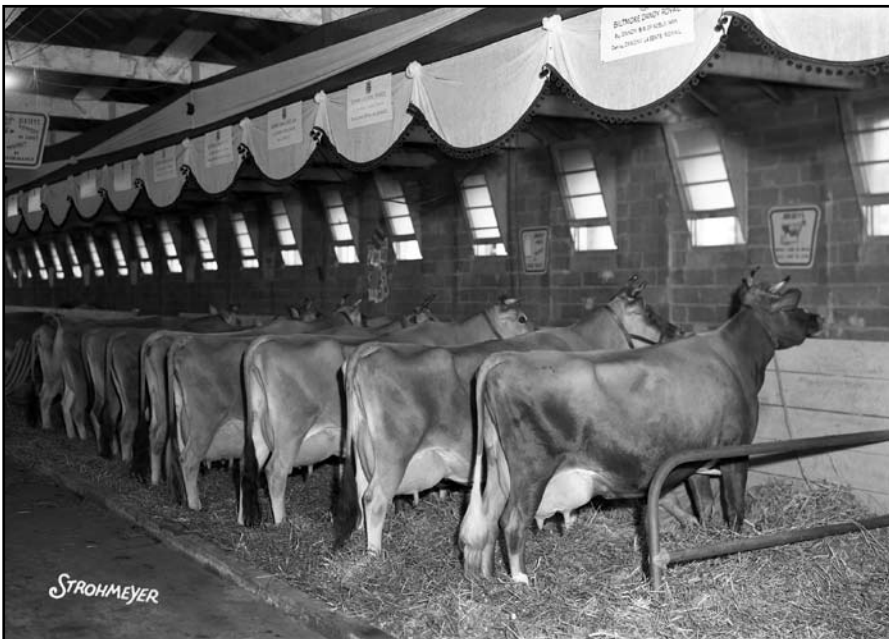
*“Cliff” Russell with
Premier Breeder &
Premier Exhibitor Banners
1953*



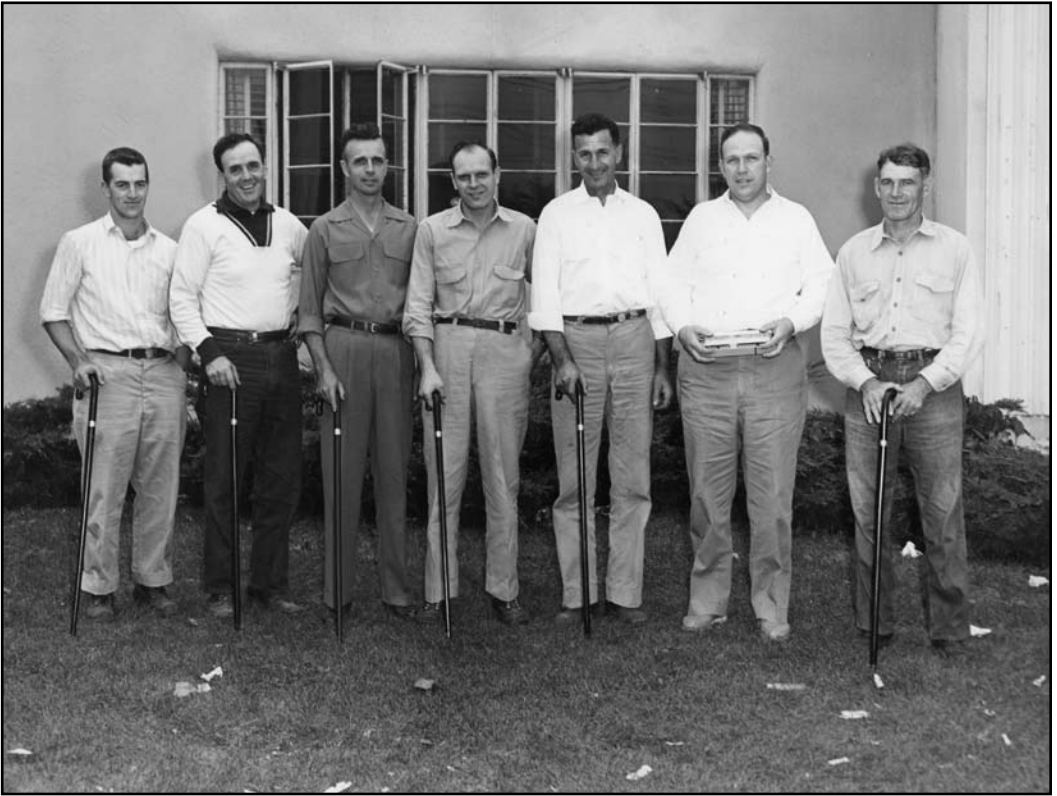
The Georgia farm traveled a limited southern show circuit with stops at the Kentucky State Fair, the National show, Chicago, and Waterloo. The circuit might vary from year to year but was always kept at four to five shows. The group was always strong in the group classes with most generally a homebred string. One box car was used for the travel and the show herd would average between 15 to 20 head. As would be expected Happy Valley would hang several Premier Breeder and Exhibitor Banners in their trophy room including those from Waterloo. Although the farm never had a National Grand Champion female it did garner three National Grand Champion Bull banners. Considered by many as the most prominent Jersey Breeding establishments of it's time, it would be very hard to find a great Jersey of today without Happy Valley, Georgia blood in her veins.



Biltmore Farms, Asheville, North Carolina was and is owned by the Vanderbilt family and was a dominant player at the shows in the 1940's and 50's. The farm still has Jersey cattle on the property although the emphasis is on production. Showing was discontinued in the late 1950's.



Biltmore at Waterloo 1954



Herdsmanship Winners 1954

*Jack Lang, Ayrshires, Ralph Bright, Brown Swiss, Kenneth Chestnut, Guernseys,
Gene Nelson, Holsteins, Chris Kampf, Jerseys,
George Edgerton, Biltmore Farms, Overall Winner, Ralph Hagar, Milking Shorthorns*

In charge of the Biltmore show string was one of the very finest showman ever created, one George Edgerton. George continued showing well into his 80's and was a popular fixture on the show circuit being awarded his Klussendorf membership in 1979. The Biltmore show circuit would include such shows as Maryland and Tennessee and West Virginia State fairs and The National Jersey show and many times "Waterloo". Like Happy Valley, Biltmore showed a mostly homebred herd and was always strong in the groups and always was in the hunt for the breeder and exhibitor banners. In 1952 Biltmore scored with National Grand Champion Male (Biltmore Dandy Royal) and Female with Biltmore Signal Bess Jane (who had won the award the previous year as well).

Harmony Farms, Greenwich, Connecticut was also a big player in the 1950's and Waterloo was a stop on their extensive show circuit. The farm was owned by music publisher Gustave Schirmer and managed by Clair Smith who went on to gain fame as the manager of Vacluse Farm in Rhode Island. Mr. Smith was a master at his craft of working with wealthy owners of Jersey cattle and succeeding in stocking their trophy rooms with gleaming trophies and purple banners. Money was no problem for Schirmer and he gave Smith the green light for buying and buy they did. The show circuit included the New York State Fair, Eastern States, Chicago, and Columbus Ohio if the National show was held there and Waterloo. In 1955 Harmony traveled to the west coast and showed at the Cow Palace in San Francisco. Harmony showed their one and only National Grand Champion in 1957 with Masterman Sleeper Dora when the show was held at Chicago and the Premier Breeder and Exhibitor honors were won at Waterloo several times.



Emilys Scott Dream with Clarence Okerland at the halter (left)

*Emily Scott Dream
1956 Waterloo Grand Champion
with Chris Kampf at the halter
(below)*



The Jersey Show

Tuesday, October 2

Wednesday, October 3

Judging — 8:00 A.M. to 2:45 P.M.

Judge — C. L. Rougeou, Lafayette, Indiana

Classes will be judged in the order they are listed below. Classes 1 to 14 inclusive will be judged the first day and class 15 to 28 will be judged the second day.

EXHIBITORS

Barlass, Alfred G. & Sons, Route 1, Janesville, Wisconsin	9
Berquist, Marvin, Dassel, Minnesota	1
Berquist, Dennis, Dassel, Minnesota	1
Blondin, Lillian, Box 526, Ruston, Louisiana	1
Collins, George W., Monticello, Minnesota	3
Fryda, Ernest A. & Sons, Sussex, Wisconsin	4
Glad, Erick V. & Son, Stratford, Iowa	8
Glad, Gunnar W., Stratford, Iowa	1
Hallstrom Farms, Richard W. Hallstrom, Waukesha, Wisconsin	3
Hanson, Palmer, Hayward, Minnesota	3
Harmony Jersey Farms, John Street, Greenwich, Connecticut	27
Hollybrook Farms, Box 1186, Minneapolis, Minnesota	2
Knutson, Wayne, Route 2, Owatonna, Minnesota	1
Lamington Jerseys, R. O. Gubelman, Whitehouse, N. J.	1
Lyon, Earl L. & Sons & Delbert Miller & Son, Toledo & Norway, Iowa	1
Lyon, Earl & Sons, Toledo, Iowa	6
Lyon, Gaylord, Toledo, Iowa	1
Lyon, Russell, Traer, Iowa	6
McGowan, Wm. J., North Stonington, Connecticut	1
Miller, Douglas, Norway, Iowa	1
Oak Hill Farm, Route 4, Cambridge, Ohio	6
Pioneer Farms, Old Lyme, Connecticut	11
Schneider, A. W. & Charles M. Young, Jesup, Iowa	3
Shadel Jerseys, Route 1, Avalon, Wisconsin	13
Shadyrest Jerseys, Ivan N. & L. Claire, Gates, West Liberty, Iowa	8
Skala Brothers, Tama, Iowa	4
Skala, E. J., Tama, Iowa	1
Tedesco, Frank, Jr., College Dairy Farms, Ames, Iowa	1
Wetzel, E. L., Waco, Texas	1
Entries in Open Classes	129
Entries in 4-H Division	51
TOTAL	180

Class No. 1—Bull Calf

Born After June 30, 1955 and Over 4 Months

\$35—\$30—\$25—\$20—\$15—\$12—\$12—\$10—\$10—\$10

- 1 Harmony Jersey Farms—Harmony Beacon Nashua 570682, 7-28-55; S—Roslyn Sadie's Beacon 534581; D—Basileus Pinn Marie 1831893.
- 2 Harmony Jersey Farms—Harmony M F Buccaneer 570683, 9-9-55; S—M F Lindale Beacon Bas 559928; D—Emily Scott's Dream 1993297.
- 3 Harmony Jersey Farms—Harmony Sporting Dancer 570684, 10-12-55; S—Harmony Sporting Boots Duke 550668; D—Design Double Oxford Wonder 1501645.
- 4 Shadel Jerseys—Shadel's Belmont Aim 567847, 7-21-55; S—Belmont Basileus 526995; D—Gil-Bar Aim Flora 1366455.
- 5 Shadel Jerseys—Shadel's Belmont Jester Aim 568093, 9-10-55; S—Belmont Basileus 526995; D—Jester Aim Fern.
- 6 Shadyrest Jerseys—Basileus Jester Pinnacle 567392, 8-5-55; S—Jester Royal Jester 504013; D—Pinnacle Lucky Aim 1585449.
- 7 Lyon, Russell—Jester W. R. Burt 568546, 9-30-55; S—Jester B. Noble Aim 542372; D—Rightful W. R. Beauty 1871779.
- 8 Fryda, Ernest A. & Sons—Basil Advancer Etta 567761, 11-22-55; S—Brampton Medalion Basil Advancer 554462; D—Jester Advancer Dionette 1805960.

1956 Waterloo entries